



# PROJECT EXPERIENCE

## Kennesaw State University



UHS was awarded the latest phase of new student housing, University Village Suites, on the Kennesaw State University (KSU) campus. KSU, which is the third-largest university in the University System of Georgia, wanted an upscale student housing complex for freshmen that promoted environmentally conscious measures as part of their continuing effort to create modern facilities that promote health, safety and efficiency.

The suite-style apartments feature private bedrooms, kitchenettes and shared bathrooms, along with an art gallery and exhibition space on the second floor of the lobby area. Completed in August, 2008, it added 915 beds to KSU's existing 2,163-bed campus. UHS accomplished the need for an environmentally conscious housing project through a sustainable design, which has included the use of renewable resources in order to minimize environmental impact. These initiatives include using building materials that consist of recycled content and low volatile organic compound (VOC) emissions, using natural lighting throughout the housing complex and implementing features that enhance indoor air quality and reduce energy and water consumption.

In addition to this project, UHS has been assisting KSU with their master planning renovations and redevelopment of their existing housing stock.



### Project Name and Location:

University Village Suites  
Kennesaw, Georgia

### Project Specifics:

Beds - 915  
Project Completion: August 2008 (Phase 1)

### Nature of Firm's Responsibility:

- Design
- Construction
- Master Planning
- At-Risk Development
- Program Scheduling
- Project Reporting
- Quality Control

### Sustainability Measures Undertaken:

- Prefabricated structural wall panels
- Lumber from renewable sources
- Carpet made of recycled content
- Use of natural lighting through large windows
- HVAC controllers with adjustable high-low setpoints
- Fluorescent fixtures
- Proximity sensors
- Electrical circuit timers
- Double-pane energy-efficient unit windows and ceiling fans
- High-efficiency toilets
- Reduced-flow shower heads

### Reference Information:

Bob Heflin, Real Estate Manager  
(770) 423-6901

### Development Manager:

University Housing Services, Inc.  
Robert M. Mills  
Executive Vice President

### Design Firm:

HADP Architecture, Inc.

### Construction Manager:

Choate Construction Company



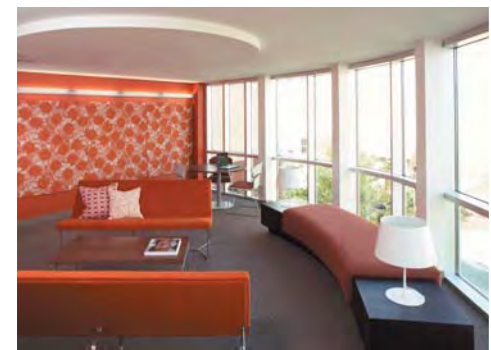
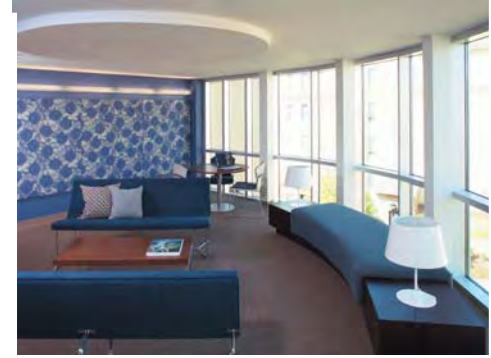
# PROJECT EXPERIENCE

## Kennesaw State University



*"We as trustees had a vision, saw the need, acted upon it, with both alacrity and care, and together built something that will be a true beacon to all those who compliment us by emulating our accomplishments. Not only will these buildings stand as physical and lasting monuments to what we do as trustees, they will provide an experience to our students unequalled in the nation. And finally, the cash flow that these living breathing buildings provide us will enable our Foundation to do more tangible things every single day to encourage our students and faculty to be better human beings and do even greater things for the world."*

Norman J. Radow  
The RADCO Companies



### KSU Sustainability Measures Include:

- Prefabricated structural wall panels
- Lumber from renewable sources
- Carpet made of recycled content
- Use of natural lighting through large windows
- HVAC controllers with adjustable high-low setpoints
- Fluorescent fixtures
- Proximity sensors
- Electrical circuit timers
- Double-pane energy-efficient unit windows and ceiling fans
- High-efficiency toilets
- Reduced-flow shower heads



University Village Suites

